

[Legal Notice: 18]

EMERGENCY POWERS ACT

(Cap. 11)

EMERGENCY POWERS (COVID-19) (NO. 3) REGULATIONS 2021

**EMERGENCY POWERS (COVID-19) (HONIARA EMERGENCY ZONE)
(RESTRICTION OF MOVEMENT OF PERSONS IN BURNS CREEK)
ORDER 2022**

I, Hon. Manasseh Damukana Sogavare, Prime Minister, under regulation 15 of the *Emergency Powers (COVID-19) (No. 3) Regulations 2021* (Legal Notice No. 318 of 2021), make the following Order:

1 Citation

This Order may be cited as the *Emergency Powers (COVID-19) (Honiara Emergency Zone) (Restriction of Movement of Persons in Burns Creek) Order 2022*.

2 Commencement

This Order commences on the day it is published in the *Gazette*.

3 Definition

In this Order:

“***Burns Creek***” means the area in the emergency zone that is:

- (a) bounded by a line with the co-ordinates specified in Part A of the Schedule; and
- (b) indicated by the red line on the map in Part B of the Schedule;

“***emergency zone***” means the emergency zone declared for Honiara by Legal Notice No. 34 of 2020 (as amended by Legal Notice No. 54 of 2020);

“***essential service***”:

- (a) has the meaning of “essential service” given in section 2(7)(a) of the *Essential Services Act* (Cap. 12); or
- (b) means any other service the interruption of which could endanger human life, destroy property or cause serious injury to persons or property, including police, correctional services, biosecurity, national disaster and emergency;

“***essential worker***” means:

- (a) a person employed or engaged in carrying out functions, duties or

responsibilities in an essential service; or

- (b) a person who the Prime Minister specifies in writing is an essential worker for the purposes of this Order;

“*matter of urgency*” in respect of a person, means a matter that is urgent for any of the following reasons:

- (a) to access immediate medical assistance or treatment for the person;
- (b) to assist another person to access immediate medical assistance or treatment;
- (c) to attend to or avoid an emergency or any other situation which, if not attended to or avoided, may result in serious injury or loss of life to the person or another person.

4 Restriction of movement of persons

- (1) On and from 6.00 pm on Sunday 23 January 2022 until this Order is revoked, a person must not enter or leave Burns Creek.
- (2) On and from 6.00 pm on Sunday 23 January 2022 until this Order is revoked, a person in Burns Creek must:
 - (a) remain in Burns Creek; and
 - (b) not leave or be away from Burns Creek; and
 - (c) when moving around Burns Creek:
 - (i) wear a face mask; and
 - (ii) practice social distancing; and
 - (iii) wash his or her hands frequently; and
 - (iv) use hand sanitizer frequently.
- (3) Subparagraph (1) or (2) does not apply to a person who:
 - (a) enters or leaves Burns Creek because of a matter of urgency; or
 - (b) is exempted from complying with this Order under paragraph 5 or
 - (c) is exempted in writing from complying with this Order by the Commissioner of Police.

5 Exemptions

- (1) An authorised officer is exempted from complying with this Order while carrying out his or her functions, responsibilities or duties as an authorised officer, or travelling to and from the place where he or she carries out those functions, responsibilities or duties.
- (2) An essential worker is exempted from complying with this Order while carrying out his or her work functions, responsibilities or duties, or travelling to and from the place where he or she carries out those functions, responsibilities or duties.

53
SCHEDULE
(paragraph 3)

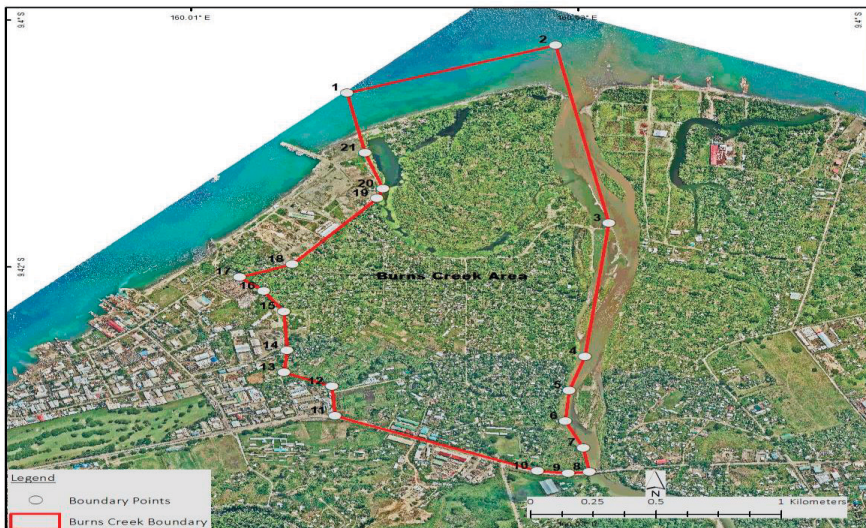
PART A

COORDINATES OF BURNS CREEK

Point Identification	Latitude	Longitude
1	-9.406899	160.019478
2	-9.404207	160.026962
3	-9.414234	160.028884
4	-9.421741	160.028035
5	-9.423654	160.027464
6	-9.425388	160.027321
7	-9.426887	160.027978
8	-9.428251	160.028177
9	-9.428315	160.027435
10	-9.428196	160.026320
11	-9.425082	160.019041
12	-9.423424	160.018947
13	-9.422645	160.017218
14	-9.421402	160.017326
15	-9.419210	160.017217
16	-9.418062	160.016499
17	-9.417272	160.015638
18	-9.416562	160.017515
19	-9.412849	160.020574
20	-9.412308	160.020770
21	-9.410275	160.020139

PART B

MAP OF BURNS CREEK



Dated this twenty-third day of January 2022.

HON. MANASSEH DAMUKANA SOGAVARE
PRIME MINISTER
